



## Blaisdell Memorial Library

---

### Hours:

**Sunday:** Closed

**Monday:** Closed

**Tuesday:** 10am - 5pm

**Wednesday:** 10am - 8pm

**Thursday:** 10am - 8pm

**Friday:** 10am - 2pm

**Saturday:** 10am - 2pm

*We are closed for some holiday weekends.*

## Happy Holidays!

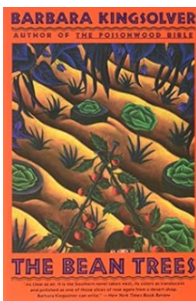
Winter is breaking over the town and the library is here to celebrate!

December is already flying by, but there's still a little more holiday fun before the season ends. Catch up on the latest specials and get ready to enter the new year with the library!

*Please note, the library will be closed on December 24th and 25th, as well as December 31st and January 1st.*

Calendars for December are now available online and in the library.

## Book Groups



**Afternoon Book Group:** *Thursday, January 2nd -- 1:30pm*  
*The Bean Trees* by Barbara Kingsolver

**Cookbook Group:** *Thursday, December 19th -- 6pm*  
*Annual Holiday Cookie Swap with The Essential Cookie Companion* by King Arthur Baking Company



*The Evening Book Group is on break for the month of December.*

## Children's Programs

The final programming session of 2024 ends on Saturday, December 14th. After this, there will be a 3 week break over the holidays before the first 2025 Winter session begins. The next session will start on January 7th and continue for 6 weeks until February 14th.

Sign-ups for all afterschool programs will be open from **Tuesday, December 17th** until **Saturday, December 21st**. Due to high interest and limited space, after-school club signups may use a lottery system. Priority is given to waitlist members from previous sessions, with remaining participants drawn from those who sign-up through the week.

Story hours are drop-in and open to all ages: Lap-sit and pre-school age children are both welcome. Sign-ups are required for STEAM and Lego + Club.

- 
- **Story Hour with Miss Julie and Miss Robin:** *Tuesdays, Thursdays, and Fridays -- 10am*
  - **STEAM Club (Grades 3 - 6):** *Tuesdays -- 3pm*
  - **LEGO+ Club (Grades K - 2):** *Thursdays -- 3pm*
  - **Weekend Story Hour:** *Every 2nd Saturday, December 14th -- 10am*
- 

- **Polar Express Storytime:** *Wednesday, December 18th -- 6pm*

Get dressed in your warmest jammies, pack your stuffy friends, and stay up late for a very special trip to the North Pole! Boarding starts with a train ticket for every child and plenty of special hot chocolate to go around. Afterwards comes the star of the night: reading the classic Christmas story, *The Polar Express*! Sign-ups are **required** for this program and space can be limited. Please contact the library to reserve your slot!

*In case of inclement weather, Thursday, December 19th will serve as our backup date.*

- **Christmas Special Story Hour:** *December 20th -- 10am*

Going to miss the library over the holidays? Come in for one last special story hour before the 24th for Christmas books and fun!

## Youth Programs

- **Middle School Club (Grades 6 - 8):** *Wednesdays -- 3pm*

The Middle School Club is for library-loving kids to get together in the library after school to try out crafts, creative writing and games! Perfect for preteens who're hitting middle school and want to have some fun when class is done!

*The Middle School Club is part of our regular programming sessions. For more information about the current programming dates, see **Children's Programs**.*

---

- **BYG:** *Wednesday, December 18th & January 15th -- 6pm*

The BYG (*Blaisdell Youth Group*) is a club for teens in middle and early high school to get together, make friends, discuss books, and participate in fun activities, including gaming, book clubs, crafts, and more! New members are always welcome and no registration is required--you can drop in at any time or even bring a friend.

*Meetings alternate between regular sessions and tabletop game sessions. There will be no BYG meeting on January 1st.*

## Regular Adult Programming

- **Game n' Gab:** *Tuesday, January 7th -- 1pm*

Join us for games, chat, snacks, and friendly competition while relaxing in the library.

---

- **Community Coffee Hour:** *Every Wednesday -- 10am*

Join us every Wednesday morning for bite-sized discussions with free coffee and snacks. Each week comes with a short presentation from members of the Nottingham and NH community about all kinds of topics! Want to present? Reach out to the library staff about a subject and date!

*Upcoming Coffee Hour Topics:*

- **December 18:** BML at Parks and Rec - The Literature of a Christmas Carol and Holiday Crafts
  - **December 25 & January 1:** *No Coffee Hour--Happy Holidays!*
  - **January 8:** Library Trustees AMA (Q&A Session)
  - **January 15:** BML at Parks and Rec - Avoiding Scams with 603 Legal Aid
- 

- **Mah-jongg Club:** *Every Wednesday -- 11:30am*

Mah-jongg is a Chinese game of collecting tiles and gaining points played with four people, similar to the card game Rummy! Whether you're a beginner interested in learning the rules or an intermediate player looking for new friends, all are welcome to BML's weekly Mah-jongg club gathering.

---

- **Homeschool Meetup:** *Wednesday, December 18th & January 15th -- 1pm*

Calling all homeschool families! Come join your fellow homeschoolers at BML to socialize, discuss, and explore the library and what it can offer in this new monthly meetup! This is a family-friendly group, so parents and children of all age are welcome to attend. Meetups are drop-in; no registration required.

## Holiday Closures

Blaisdell Memorial Library will be closed on **December 24th & 25th**, as well as **December 31st to January 1st** for the holidays. During this time you will not be able to pick up or borrow any items, so be sure to drop by when you can!

## Upcoming at the Library

Blaisdell Memorial Library is continuing our furniture upgrade throughout the building, with all new tables on the first floor and fully upgraded picture book bins in the children's room! There may be additional changes to furnishings and layout into January, so please bear with us as we go.

The library is planning to start a **1000 Books Before Kindergarten** program in 2025! You may have heard of this early-literacy challenge before: the goal is for parents and caregivers to aim to read **1,000** books to their children before they enter Kindergarten to help foster an early love of reading!

With more and more young patrons joining us each month, we think it's the perfect time to start up a program to help you track and celebrate the reading

you do with your children. Look forward to more information on what this entails and how to get involved in the coming months!

Finally, as we enter 2025 our **Lost and Found** box is starting to fill up. We particularly encourage all of our story hour and after school program families take a moment to look through and see if anything belongs to you!

## Reflecting on Years Past

So I meant to say something back in October but the Halloween Festival was so exciting it had to be cut: I've been at Blaisdell Memorial Library for four years now! It feels both like such a long time and far too short at once...

I joined the library in 2020, which made for a slightly *unusual* start, but over these past years I've been lucky enough to watch BML grow and change into the library of today. I've met more of you, participated in more programs, helped bring in more collections and worked alongside the entire library staff as we work towards expanding and improving.

2024 in particular has been incredible--it's almost hard for me to remember how the library looked before we shifted the front desk, much less everything else! Even setting aside the physical, we've seen our Coffee Hours go from hopeful experiment to a programming favorite, welcomed the Mahjongg club (hi! I'll play with you one day!), and started up the Middle School group!

It's been incredible to see and incredible to be a part of it. I'm so happy with the response we've gotten and I'm proud to have helped alongside the entire BML staff. *But since I write the newsletter, I get to toot my own horn and advertise things I worked on personally!*

With the cold weather and holiday break, now's the best time for indoor entertainment! A board game is the perfect way to spend a cozy afternoon and you can borrow them for 3 weeks at a time! If it gets too cold (or you just need to get the kids out of the house for a while) why not come use the library's Nintendo Switch? All of our games are for two or more players and are rated E for everyone, so the whole family can play! And of course, if you want to make the perfect personalized present, have you heard about the button-maker I've been raving about all year? Print off some family photos or bring in your children's favorite doodles and turn them into buttons! How cute would that be?!

...and there's books, and DVDs, and story times, and all that other good library stuff, I suppose. Plus heat and wi-fi and charging outlets, for those future power outages. We've got a little something for everyone, so don't forget to stop by before the end of the year! We'll be here, waiting for you!

---

Jordan Reed  
Circulation and Tech Services

---



---

*Copyright © 2024 Blaisdell Memorial Library, All rights reserved.*

Want to change how you receive these emails?  
You can [update your preferences](#) or [unsubscribe from this list](#).

